

Retail



- **1,000 square feet available**
- **14882 Clayton Road**
- Former Baskin Robbins - ice cream equipment in place
- Busy neighborhood retail center
- Southeast corner of the intersection of Clayton and Baxter Roads
- Tenant mix includes Pi Express, St. Louis Bread Company and American Cleaners
- Demographics: (1 mile)
 - Population: 8,705
 - Average Household Income: \$96,389
 - Traffic count: 36,381 VPD
- **\$18.00 PSF, NNN**

HUTKIN DEVELOPMENT COMPANY
10829 Olive Boulevard
Suite 200
St. Louis, MO 63141

Telephone 314.872.9140
FAX 314.872.9001

Visit our website:
www.hutkin.com

CONTACT

Brad Eisel
beisel@hutkin.com
Cell 314.800.6654

Ryan Carlie
rcarlie@hutkin.com
Cell 314.496.4887

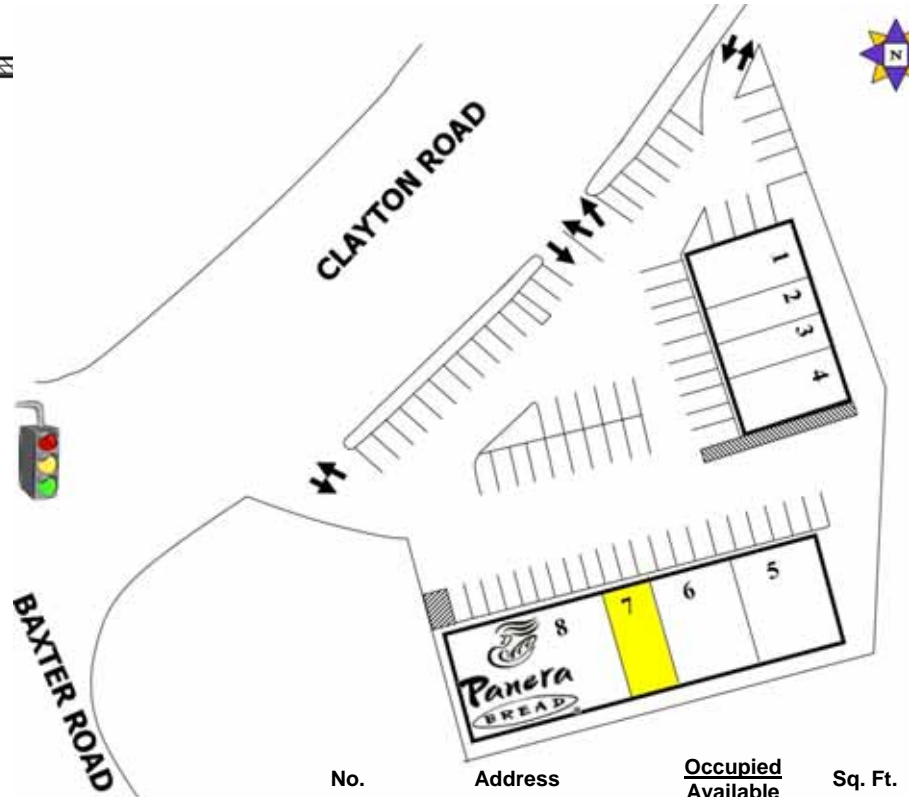
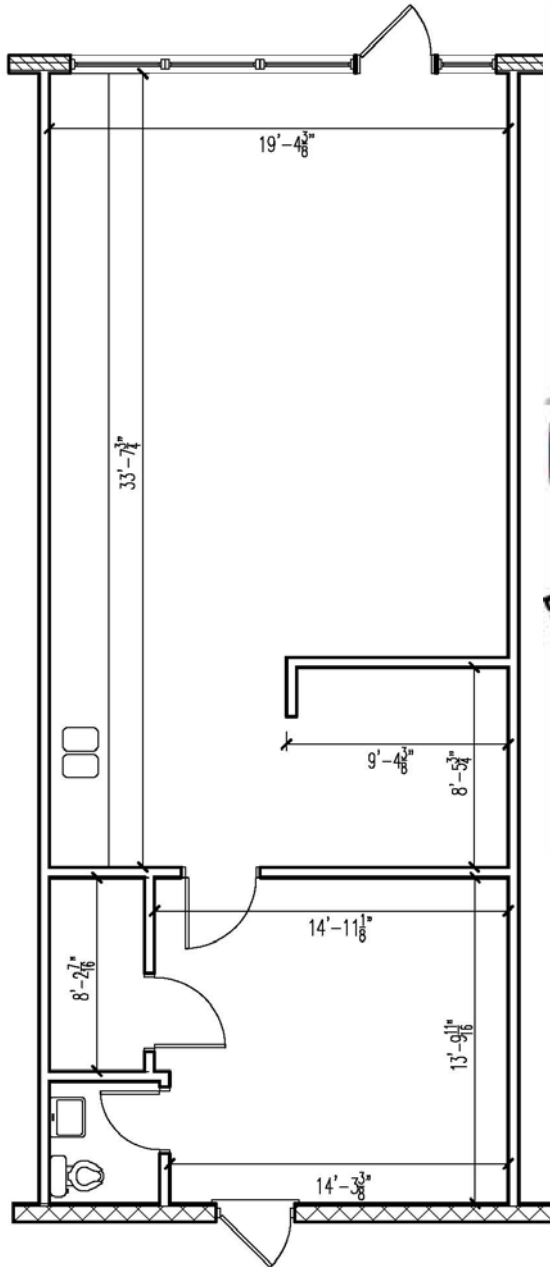
See site plan and floor plans on reverse

HUTKIN

DEVELOPMENT COMPANY

FOR LEASE

14866-14888 Clayton Road
Chesterfield, MO 63017



Retail



No.	Address	Occupied Available	Sq. Ft.
1	14866 Clayton Road	Occupied	1,250
2	14868 Clayton Road	Occupied	1,000
3	14870 Clayton Road	Occupied	1,000
4	14872 Clayton Road	Occupied	1,250
5	14874 Clayton Road	Occupied	2,000
6	14878 Clayton Road	Occupied	2,000
7	14882 Clayton Road	AVAILABLE	1,000
8	14884-88 Clayton Road	Occupied	4,000

HUTKIN DEVELOPMENT COMPANY
10829 Olive Boulevard
Suite 200
St. Louis, MO 63141

Telephone 314.872.9140
FAX 314.872.9001

Visit our website:
www.hutkin.com