



- 2,604 & 2,688 Square Feet Available (suites can be combined to 5,292 square feet)
  - **1859 Craig Road**
    - 2,688 square feet
    - 100% office finish
    - **\$7.50 PSF, + CAM**
  - **1861 Craig Road**
    - 2,604 square feet
    - 100% office finish
    - **\$7.50 PSF, + CAM**
- Located just south of Page Avenue on Craig Road
- 100% HVAC
- Attractive Multi-Tenant office/warehouse building
- Access to Loading Dock

**See site plan and floor plans on reverse**

The information contained herein was obtained from a source we consider to be reliable. While we have no reason to doubt its accuracy, we do not guarantee it. All information contained herein is subject to change without notice

*Office*

HUTKIN DEVELOPMENT COMPANY  
10829 Olive Boulevard  
Suite 200  
St. Louis, MO 63141

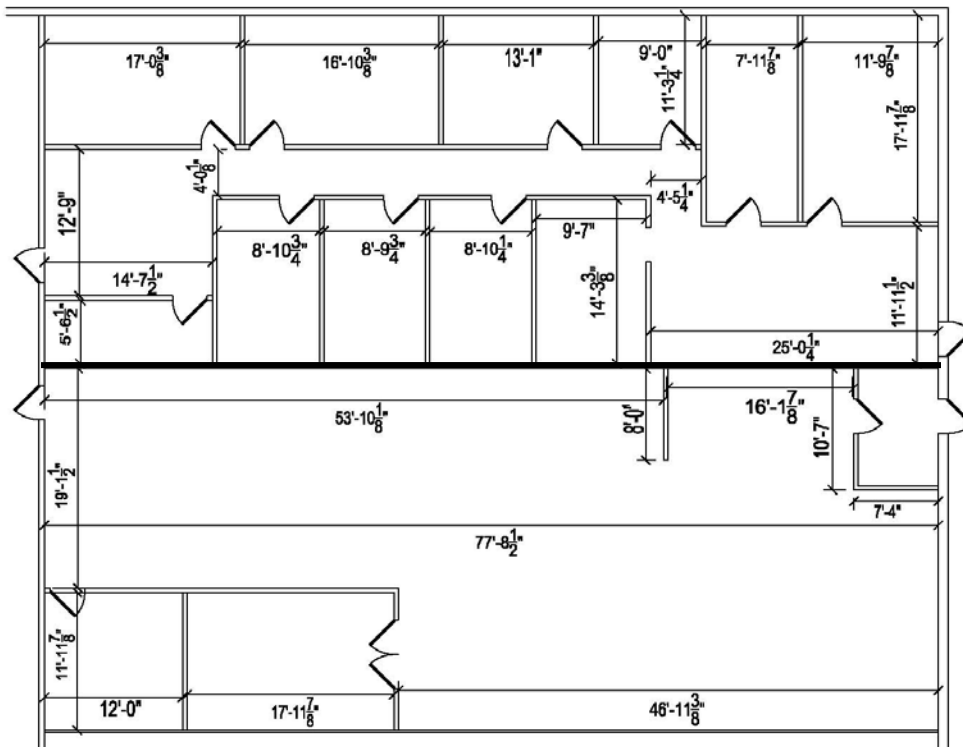
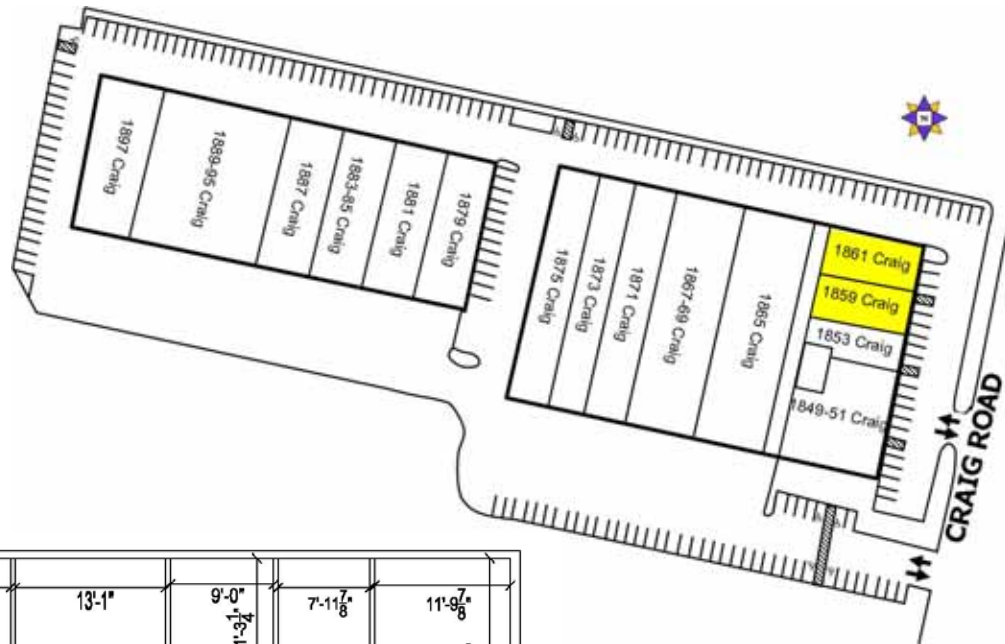
Telephone 314.872.9140  
FAX 314.872.9001

Visit our website:  
[www.hutkin.com](http://www.hutkin.com)

**CONTACT**

Ryan Carlie  
[rcarlie@hutkin.com](mailto:rcarlie@hutkin.com)  
Cell 314.496.4887

Brad Eisel  
[beisel@hutkin.com](mailto:beisel@hutkin.com)  
Cell 314.800.6654



1861 Craig

1859 Craig

*Office*



HUTKIN DEVELOPMENT COMPANY  
10829 Olive Boulevard  
Suite 200  
St. Louis, MO 63141

Telephone 314.872.9140  
FAX 314.872.9001

Visit our website:  
[www.hutkin.com](http://www.hutkin.com)