

HUTKIN

DEVELOPMENT COMPANY

FOR LEASE

Retail / Office

445 - 463 N. New Ballas
Creve Coeur, MO 63141



- **704 Square Feet, 2nd Floor Office/Medical Suite Available**
- **443 N New Ballas, Suite 231**
- Neighborhood center anchored by St. Louis Bread Company and Wine & Cheese Place
- Located within a highly affluent demographic
- Signalized intersection
- **\$1,100 per month, + Electricity**

HUTKIN DEVELOPMENT COMPANY
10829 Olive Boulevard
Suite 200
St. Louis, MO 63141

Telephone 314.872.9140
FAX 314.872.9001

Visit our website:
www.hutkin.com

CONTACT

Brad Eisel
beisel@hutkin.com
Cell 314.800.6654

Ryan Carlie
rcarlie@hutkin.com
Cell 314.496.4887

See site plan and demographics on reverse

HUTKIN

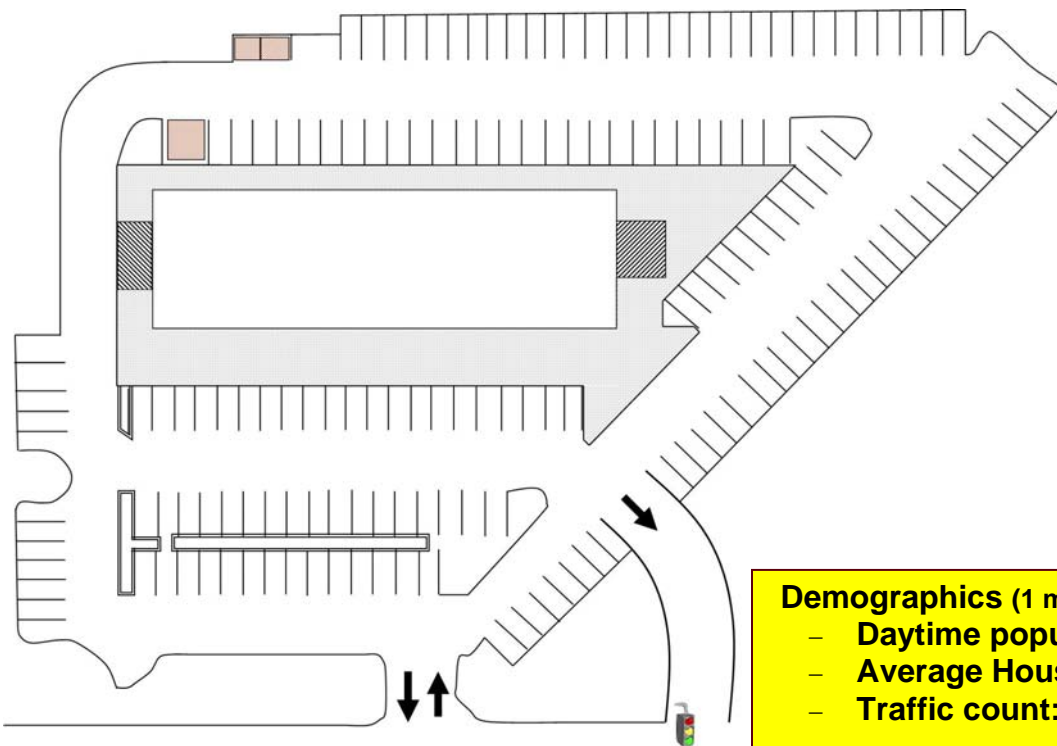
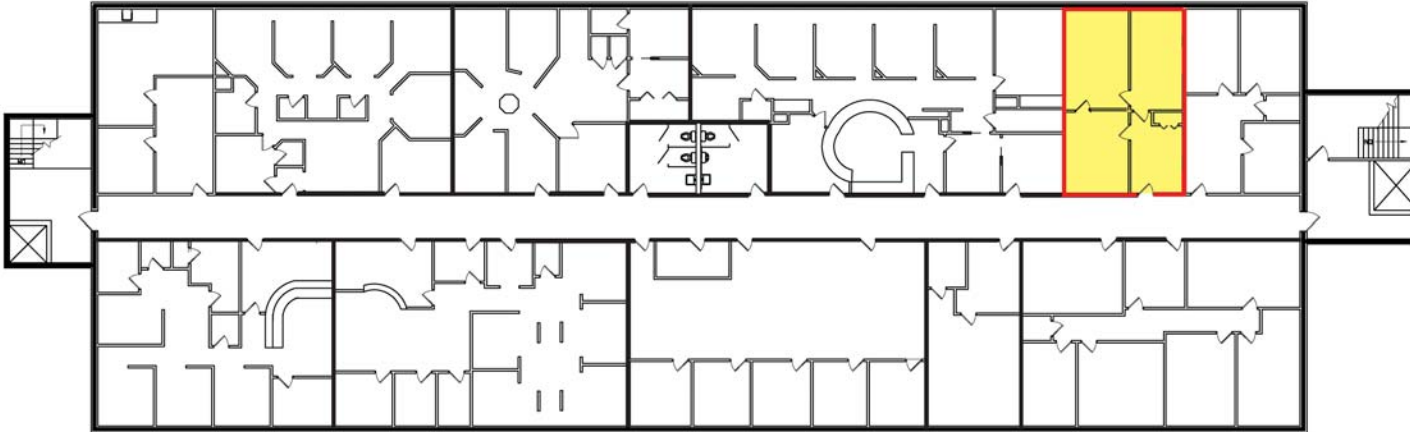
DEVELOPMENT COMPANY

FOR LEASE

Retail / Office

445 - 463 N. New Ballas
Creve Coeur, MO 63141

SECOND FLOOR - OFFICE



Demographics (1 mile)

- Daytime population: 25,861
- Average Household Income: \$ 134,052
- Traffic count: 16,000 VPD



HUTKIN DEVELOPMENT COMPANY
10829 Olive Boulevard
Suite 200
St. Louis, MO 63141

Telephone 314.872.9140
FAX 314.872.9001

Visit our website:
www.hutkin.com